

SAFETY TIPS

TIPS FOR SAFER FORKLIFT OPERATION

Drive in reverse for better vision with bulky loads.



CONTEST

Win an exclusive UMW Humibifier!

All you have to do is answer 3 simple questions. Find the easy answers to these questions in this issue of UMW Industries newsletter. Then email your entries to umwi-infodesk@umw.com.my no later than 30th September, 2021. Ten lucky winners will be randomly selected from the correct entries.



1. Name one of the operator-friendly design features found in Toyota FDZN/FGZN series.

2. Name one of the class-leading product features found in BT Reflex R-E-O Series.

3. Name one of the applications for Tennant S16 Sweeper.

Name: _____ IC No: _____

Contact No: _____

Company Name: _____

Company Address: _____

Delivery Address: _____

Results will be published on our website by 15th October, 2021. Winners will be notified by post.



COVER STORY

Long-Standing Favourite
Gets A Facelift
FDZN/FGZN Series

PRODUCT WATCH

Class-Leading Reach Trucks

PRODUCT WATCH

Automate Virtually Anything

PRODUCT WATCH

Moving Ahead With Automation

We appreciate your feedback.
Write or call:

The Editor
UMW INDUSTRIES TODAY
UMW Industries (1985) Sdn. Bhd.
No. 14, Jalan Utas 15/7, P.O. Box 7052,
40915 Shah Alam, Selangor
Tel: 03-5163 3800
Fax: 03-5163 3863
umwi-infodesk@umw.com.my
www.umw-industries.com.my

LONG-STANDING FAVOURITE GETS A FACELIFT

FDZN/FGZN Series

Engine-powered forklift 2.0 to 3.0 ton

There's a lot to be said for paying extra to get new technologies and innovations. But (and especially if your operations don't require such new-fangled inventions), there's also a great deal of sense in opting for tried, tested and true products that have served everyone well for many years.

Following this wisdom, Toyota is reintroducing a stalwart model, but with a refreshing new exterior, and also added some sensible new features that further heighten safety. Take a look at what makes the FDZN/FGZN Series such an enduring range of Engine-powered Forklifts.



YOU CAN RELY ON IT

- It has a Toyota-built engine with rapid response and exceptional work efficiency.
- Hydraulic components such as control valves are used for stable performance and precise control over lift operations.
- It's highly durable, suited to indoor and outdoor conditions, and adaptable to a variety of worksites and applications.

IT DOESN'T BURN A HOLE IN YOUR WALLET

The cost of ownership is low. Here's why:

- It's been proven to have lower fuel consumption of up to 33% compared to similar models in the market.
- Durable functional parts are used. No decorative covers and no plastic body parts means less maintenance costs caused by breakage or deterioration.

And when it does need maintenance, the simplicity of design of this Series helps to save time and energy since maintenance is easy, all of which translates into savings:

- Wide-opening thick steel-plate engine hood gives easy access to the engine compartment for inspection or servicing.
- Easily detachable two-piece floorboard also gives wide-open access to the engine and power train.



IT'S EASY TO OPERATE

This is a no-nonsense workhorse that has all the requirements which make operating it a breeze. You'll find it also features time-honoured Toyota values such as ensuring the operator's comfort and safety.

- **Excellent Visibility** via the lattice design headguard and angled lower stay which gives a good view of the fork tips.
- **Large Assist Grip (Opt)** measuring 350mm for easy access to and exit from the machine.
- **Small-diameter Steering Wheel** and full hydraulic power steering system for excellent manoeuvrability.
- **Combination Meter** with several indicators to tell the operator the current state of the forklift: water-temperature indicator, fuel meter, hour meter and engine oil-temperature warning, among others.
- **Double-action Parking Brake** for safe and easy braking.

YOU'LL LOVE THE ATTITUDE

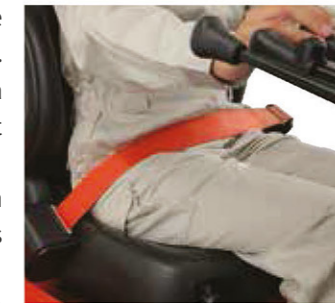
It's a friendly machine, both to people and to the environment.

- **Low Noise and Low Vibration** for a more comfortable worksite, thanks to the Toyota-built engine, low-speed drive, and floating engine mounting.
- **Shockless Landing** via automatically decreased speed of fork descent just before it contacts the ground, resulting in reduced contact noise that's 10 decibels lower than other diesel forklifts.
- **Lead-free Paint** and plating that's free of hexavalent chromium, for less impact on the environment.

CONTINUATION OF SAFETY

Much thought has been put into ensuring worker safety. These are some of the safety features you'll find in the FDZN/FGZN Series that will keep your workers safe and also save you money:

- **Rear axle damper.** Helps ensure lateral stability and safer operation.
- **Key-lift Interlock.** Prevents accidents. When the key is switched off, the forks do not descend even if the load-handling levers are unintentionally operated.
- **ORS & OPS (optional).** According to statistics, 33% of fatal accidents involve mistakenly activated forklift functions while the operators were absent from their seats. The patented ORS seat, if installed, has an inbuilt OPS system that detects the presence of an operator. If he isn't there, all travel and forklift functions stop and an alarm sounds to get his attention.
- **Leak-lock System (installed with OPS).** A check valve in the control valve reduces the amount of spontaneous fork descent and forward tilt.



NEW Orange Seatbelt **OPT**

The seatbelt is coloured an eye-catching orange to remind the operator to securely fasten it.

NEW Seatbelt Interlock System **OPT**

The forklift does not move unless the seatbelt is properly fastened.



NEW Blue Lights **OPT**

A blue beam of light appears on the ground to inform pedestrians of the forklift's presence, and helps to prevent accidents.

There are even more reasons that the FDZN/FGZN Series is such a popular model. Let us tell you more about it or visit our website at umw-industries.com.my. Alternatively, contact us at umwi-infodesk@umw.com.my and we'll answer all your questions.



CLASS-LEADING REACH TRUCKS

The BT Reflex R-E-O Series

BT has a long history of providing class-leading reach trucks to all sorts of facilities that require warehousing vehicles which give high performance, have low energy consumption, offer ergonomically performed procedures, and most importantly, ensure safety. The new BT Reflex R-E-O Series of Reach Trucks proudly continues that tradition.

So what is so special about these BT trucks that make them class leaders even for the most intensive of warehouse applications?



SPEEDIER & SAFER LOAD HANDLING

For a start, nothing stays the same in BT. Following the *kaizen* principle of continuous improvement, all current BT Reach Trucks have class-leading features such as:

- **the unique tilting cab system** for demanding and repetitive high-level work, reducing neck and shoulder strain and allowing for faster and more accurate fork positioning;
- **360° steering** so that the truck can turn 180° and then travel in the opposite direction in one smooth movement without stopping, saving valuable time; and
- **transitional lift control**, the ingenious solution of using electronic valves to give smooth, shock-less, high-speed lifting and lowering of the mast, increasing energy efficiency up to 25% by running at constant high speed. (Ask us for more facts about this feature!)

WORKS LONGER AT LESS COST

Performance has been upped by several notches with the introduction of three intelligent high-density energy packs, based on Toyota's own modular Lithium-ion battery solution. They offer:

- Flexibility. Three different sizes to fit various applications.
- Fast-charging & consistent power delivery.
- Less CO₂ emissions, more environment-friendly.

THE DRIVER IS IN CONTROL

Every non-automated vehicle needs a competent driver. Much thought was put into making sure that the driver stays alert, informed, comfortable and safe throughout his shift. All controls are at his finger tips for heightened productivity.

- New right-hand control unit, compact steering wheel, and palm support.
- Unique control box with a large, state-of-the-art, intuitive, colour touchscreen with clear and easy-to-read menus, programmable functions and performance parameters.
- Optional air-suspension seat for extra comfort.



Redesigned driver compartment offers intuitive and ergonomic features as well as a comfortable and safe workstation.



New touchscreen display provides easy-to-read information and allows simple interactivity between driver and truck.



Intelligent energy packs based on Toyota high density Li-Ion battery solution allow new levels of performance, maximising energy efficiency while reducing energy cost and CO₂ emissions.

TAKE TOTAL COMMAND

Can you see everything at the same time, and yet not move from your chair? Yes! The R-E-O Series are smart trucks, factory-fitted with integrated telematics and connected to Toyota's I_Site system. From wherever the trucks are located in your facility, you can instantly know what each is doing, exactly where it is, its performance, and what needs to be done to keep it at optimal functionality.

To ensure that only competent drivers handle the trucks, the new touchscreen interface on the trucks includes features such as Smart Access which allows only authorised drivers to start the machines. It also prompts the driver to conduct a pre-operational check before every shift.

With all the above features, it comes as no surprise that BT Reach Trucks continue to be in demand. We'd be happy to tell you more about the new BT Reflex R-E-O Series. Just email us at umwi-infodesk@umw.com.my or visit our website umw-industries.com.my.



AUTOMATE VIRTUALLY ANYTHING

One arm to do it all! That's what the e-Series collaborative robot (cobot) offers: flexible automation for almost any application that you can think of, for companies of all sizes.

Lightweight and easy to deploy, the e-Series cobot from Universal Robots (UR) is reinventing industrial robotics, automating production in industries that have hitherto perceived robots as being difficult and expensive to integrate. A variety of Application Kits developed by UR and its partners provide simple yet effective solutions, including one which focuses on palletising.



A NEW WAY TO PALLETISE

Traditional industrial palletising is usually a manual operation in which workers carry out tasks in non-ergonomic ways. Such methods often result in repeated strain and injuries and endanger the health of the workers. When this happens, labour costs are driven up and production becomes inefficient. The employee retention rate will also soon pose a problem for most companies.

Avoid having to deal with these setbacks by installing UR's versatile e-Series cobots which can directly be integrated into existing workspaces. The collaborative safety features of the cobot ensure safe operation and eliminate conventional robotic technology which requires guarding.

Technical and electrical interfaces are seamlessly adapted for UR cobots, thanks to the unique UR+ ecosystem. This plug-and-play kit enables a new world of collaborative robotic automation and optimises any process. Configuration is easy and does not require any prior experience with robotics. Simply teach the cobot the positions to take, put together the desired pallet stacking arrangement, and the palletising system is good to go. The cobot works around the clock too!

When the e-Series cobot is used in palletising tasks, you enjoy faster cycle times, quick ROI and improved productivity at the facility. It also enables operators to focus on more ergonomically friendly tasks.

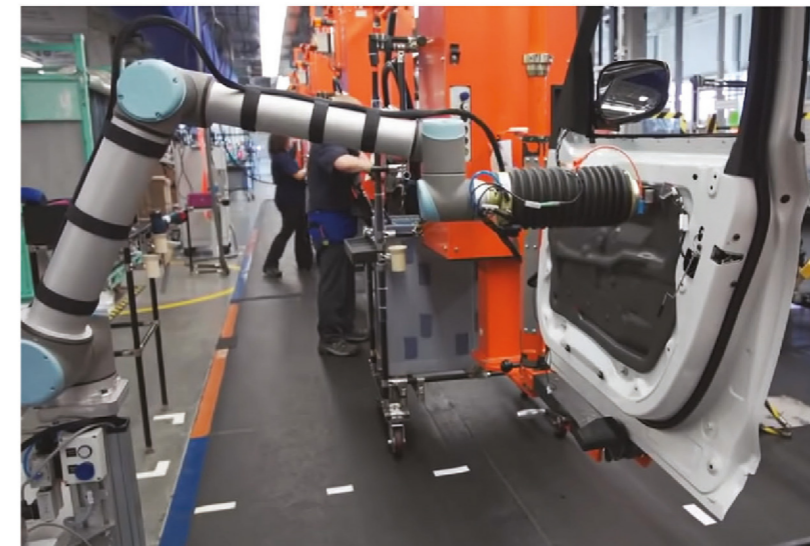


POWERING UP FOR THE FUTURE

• Automotive & Subcontractors

Huge opportunities remain for incremental growth even if an industry is already highly automated, such as in the automotive industry where robots have been used in assembly lines for a variety of manufacturing processes. Collaborative robots are currently driving new efficiencies across the automotive production line in applications that include the attaching of door handles and windshield wipers.

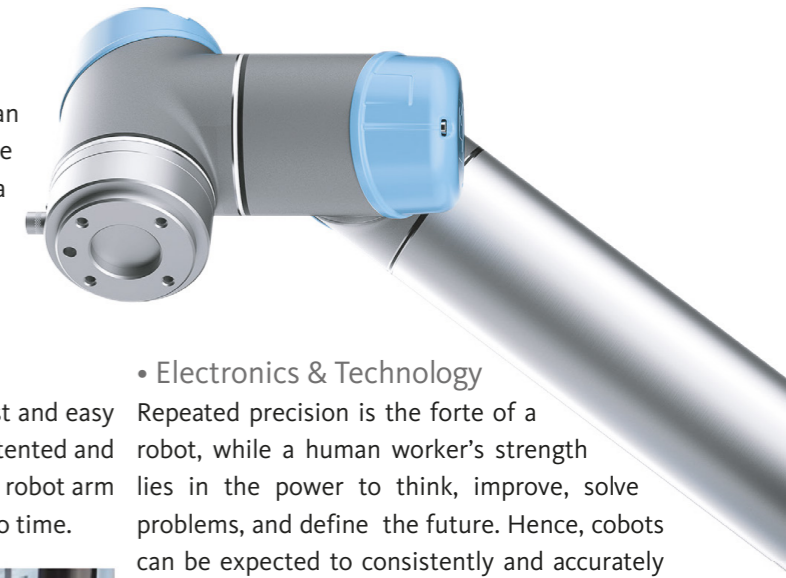
The UR e-Series cobot is designed to be worker-friendly. It's fast and easy to implement and no complex programming is involved. The patented and intuitive 3D-interface requires the operator to simply move the robot arm to the desired position points and it will be up and running in no time.



Adaptable to any process, this cobot only requires minimal integration to meet changing factory needs. It doesn't even take up much space and it can be moved from assembly line to assembly line without any difficulty. The UR e-Series has a payload of up to 16kg, which further increases its flexibility and mobility advantage.

Installing the e-Series in the usually highly labour-intensive assembly lines in automotive manufacturing reaps multiple benefits. Among them are a reduction in assembly time, increased production speed, improved quality, and all the advantages of advanced robotic automation. Beyond the assembly line, cobots can also be used in other applications such as in quality inspection, dispensing and finishing.

When hazardous and repetitive tasks are handled by cobots, workers are freed to focus on higher-value tasks.



• Electronics & Technology

Repeated precision is the forte of a robot, while a human worker's strength lies in the power to think, improve, solve problems, and define the future. Hence, cobots can be expected to consistently and accurately perform assembly processes such as inserting and driving in screws.

The built-in force/torque sensor in the e-Series robots allow them to be placed directly into screw-driving applications without the need for costly torque-controlled screw-driving tools. Force-sensing technology makes automated processes more acute and responsive, especially where high precision is required. In addition, the UR robot arms' repeatability of down to ± 0.03 mm (30 microns) is perfect for automating quick-precision handling.



In an age of social distancing, you'll find that the e-Series cobots are the ideal complement to human workers, safely and efficiently working alongside them in processes that are not heavy-duty tasks.

Email us at umwi-infodesk@umw.com.my or visit our website umw-industries.com.my to find out how the UR e-Series cobots can help to improve your production processes.

MOVING AHEAD WITH AUTOMATION

The Covid-19 virus has certainly changed how the world functions, and the automotive industry is not spared these changes. New ways of operating are needed in order for the industry to remain resilient, efficient and innovative so that it can cater to increasing market demand. This means that a lot of changes have to be made over a short period of time, an approach that is very different from the model changeovers which automakers have been used to, in terms of controlling and managing change. The question almost every automotive player in the market now faces is how to handle the smooth transportation of parts and assembly within its own four walls.

The industry is at a time when automated material flow is a focal point. Automakers are not attempting large-scale approaches to making improvements. Instead, the focus is on continuous improvement, with 'flexibility' being the keyword. The more flexibility there is in auto plants, the easier it is for them to prepare their plans for future expansion.

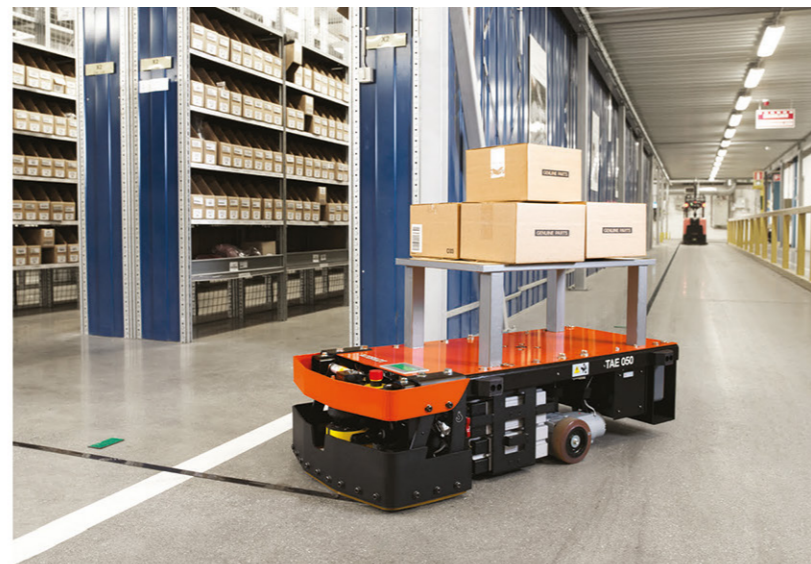
This is where Toyota AGV Key Cart becomes the quick win in bridging the gap for those in the automotive industry. The AGV Key Cart offers flexibility in several ways. First, it has deployment flexibility. It's easy to set up and to change the route. It's also easy to program, requiring only the Excel program to work. That's right: just Excel will do. No complicated coding or

programming is needed. Workers can also be trained and guided to program the system on their own.

Second, the minimal effort taken to train workers to operate the Key Cart system makes expansion plans for the future so much easier to carry out. Companies can also up-skill their workforce at the same time.

Third, the AGV Key Cart has design flexibility for its attachments and can easily be customised for various applications. For example, it can tow or load parts, simply by using different attachments which include trolleys, pallets and carts, among many other add-ons.

Last, but certainly not the least, UMW also offers rental packages that allow automakers to have financial flexibility. They do not have to spend big on upfront costs in order to receive ROI benefits from the Key Cart. With so much in its favour, the AGV Key Cart is an indispensable item to have if running an efficient operation is the goal.



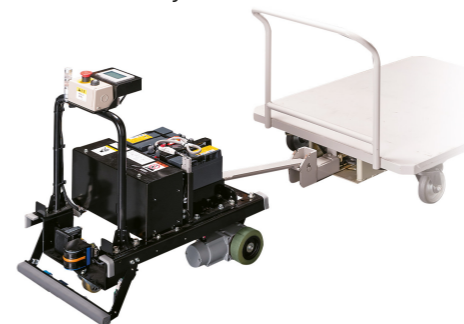
Key Cart Direct Loading



Key Cart with Pallet



Key Cart with Trolley



Key Cart with Trolley



Key Cart with Trolley

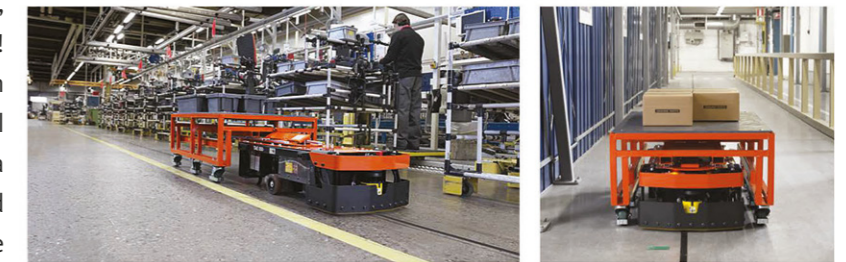
AGV KEY CARTS & KAYABA

What recently happened at Kayaba (Malaysia) Sdn Bhd is a good example of the benefits of using the AGV Key Cart. The auto parts supplier wanted to improve its line-side delivery of parts from the parts store to the production line as well as to get the empty carts back to the parts store. The target was to eliminate the need for workers to push trolleys back and forth to deliver the parts. The ideal solution must also be flexible enough to cater for the implementation of the company's blueprint for future expansion.

Just two AGV Key Carts got the job done.

A whopping 67% of the labour hours previously required for those operations was eliminated, and the movement of parts was improved too! The automated delivery of parts ensured smooth process flow, especially in the case of model change in the production line. In fact, Kayaba also solved the problem of empty boxes and trolleys littering the production line since the AGV Key Carts sent all of these back to the store. On top of that, the company was able to improve efficiencies and to achieve its ROI. It is currently planning how to expand this solution to cover different processes according to the blueprint for expansion.

In this successful project, Kayaba opted for the rental package that included AGV Key Cart maintenance, which made perfect sense since the company could focus on its operations and not have to worry about maintaining the Carts. The simple shift to AGV Key Carts is a classic example of how automation will benefit those in the automotive industry.



Kayaba is not the only automotive player who ventured into using AGV Key Carts. Since it was introduced, many customers from the automotive as well as other industries have deployed the technologies in their plants. The Toyota AGV Key Cart is now the preferred transportation mode for delivery of parts.

Email us at umwi-infodesk@umw.com.my or visit our website umw-industries.com.my and let us tell you how AGVs can boost the efficiency of your operations too.

IN ONE CLEAN SWEEP

Tennant S16 Ride-On Sweeper

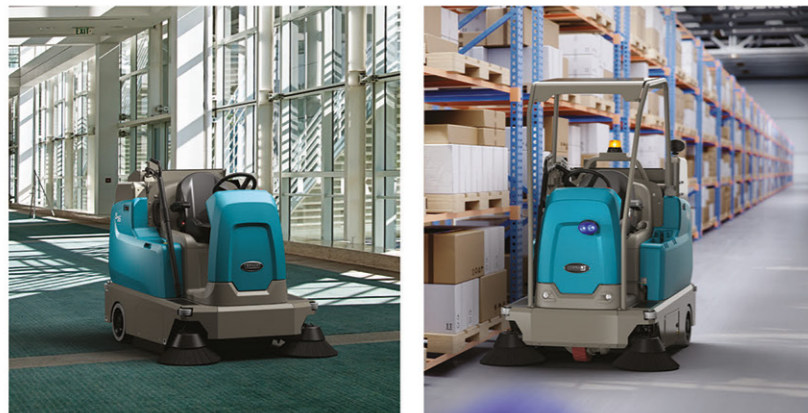
Dust is an ever-present problem no matter where one's workplace is. In large confined spaces such as warehouses and factories, cleaning away the daily collection of fine particles and other debris becomes a chore that an army of brooms and brushes, not to mention human sweepers, would have to tackle.

But with the right equipment, what it takes to get a large area professionally swept in hardly any time at all, is just one person.

ONE IS ENOUGH

One person and one Tennant S16. That's all you need for high-performance cleaning.

Tennant's latest model of Ride-on Sweepers, the S16, is one lean mean cleaning machine that gobbles up everything in its wide sweep path and dumps the debris into a large-capacity hopper. Powerful, versatile and compact, this battery-operated equipment gives edge-to-edge sweeping in a single pass, with consistently clean results.



ADEPTLY CLEANS VARIOUS FLOOR TYPES

The Tennant S16 will sweep just as thoroughly in large open spaces or along tight narrow aisles and its turning circle is so small that the machine acts as if it can turn on a dime. Convention centres, manufacturing facilities, warehouses, loading docks, parking lots, indoors or outdoors, in areas with or without ramps, anywhere that has floors that are concrete, tiled or carpeted is fair game for the very versatile S16.

Did we mention that it's versatile? The machine was designed to make cleaning easy for an operator, so again two configurations of the S16 are available. The low-dump model has a manually removable container with a VarioHeight™ handle that adjusts to the operator's height. The powered high-dump version can accommodate larger debris and has a high dump height when emptying the hopper into big garbage bins.

ENJOY CLEANER AIR QUALITY

When dust and debris are captured by the S16, they stay captured. The machine's exceptional dust control consists of a multi-stage filtration system. Dirt particles are literally jolted off the filter by a powerful and effective filter shaker, leaving the filter much cleaner to repeatedly sift dirty air and debris before allowing the filtered air to exit.

Tennant's MaxPro™ sweeping technology applies consistent brush pressure regardless of debris and surface changes. For carpeted floors, any picked-up fibres go through a FiberShield™ lint screen which successfully captures them. Carpet damage is prevented by optional non-marking skirts. You enjoy safer, cleaner floors and healthier, cleaner air.

EASY TO USE, EASY TO MAINTAIN

The key word is 'easy'. From the moment the operator takes that low step-in to the S16 and sits in the seat, it's all go. There's no need to reset the machine every time it's used because all recent machine settings are automatically remembered and engaged, so no time needs to be wasted.

The operator basically just needs to push one button to start the S16.

When the S16 needs some time off for routine maintenance, that's also a fast and simple task since the easily identifiable yellow maintenance touchpoints indicate the places to check. You'll have easy access to these locations and no tools are required. The brushes can also be easily and quickly removed for inspection and replacement if the worn-brush indicator notifies the operator.

SAVE, SAVE, SAVE

The Tennant S16 is big on productivity, and small on consumption. Here's how you'll save:

- Less time to get huge areas properly cleaned, less manpower needed and no fossil fuel used.
- Less medical bills due to better worker health since the battery-powered S16 is fuel-free, fumes-free and also quieter.
- Extended runtime on Eco-Mode™, hence more productivity.

INSIDE THE S16



Check out how the Tennant S16 operates. Kindly email us at umwi-infodesk@umw.com.my or visit our website umw-industries.com.my to know more about the S16.

FREE ON-LINE FORKLIFT OPERATOR'S AND SAFETY TRAINING



In line with our WECare Campaign, we are providing our support by giving you FREE online training for your forklift operators.

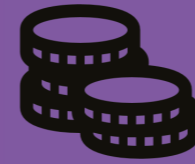
How to get your FREE online training? Simple!

- Just 'like' our Facebook page
- Send us a message "FOST" via our messenger

We will send you the link to access our online training.

Limited to 100 sessions, first come first served basis!

TOYOTA REFURBISHED EQUIPMENT



FINANCING PACKAGE



HIGH QUALITY CERTIFIED



WIDE-RANGING MODELS

**Extended
Warranty
Up To
12
MONTHS***



SHORT TERM RENTAL



FLEXIBILITY

Short term rental depending on your business needs



PRODUCTS LINE UP

Our products line up ranges from different tonnage of forklifts to warehouse trucks



SMART MANAGEMENT

Our experienced personnel will help you maintain your trucks



PARTS AVAILABILITY

Adequate fast moving parts availability

MAINTENANCE & PARTS REPLACEMENT PACKAGES



MAINTENANCE PACKAGE

Save up to 20% on normal/general service & starter battery package



PARTS REPLACEMENT

Discounts up to 40% and extended warranty

**Discounts Up To
40%**

**Terms and conditions apply*

Campaign Period: 15th June 2021 to 31st October 2021.

#WECARE
campaign

SUPPORTING YOUR BUSINESS DURING MCO