

Solutions For Every Pallet®

Whether you own a single forklift or a fleet, we want to show you why Toyota Material Handling is the world's number one forklift company#.

We've got the range to provide you with the best possible material handling solutions, plus the service and replacement parts support you'd expect from the world leader.

The benefits of dealing with Toyota Material Handling include:

- Australia's biggest range of materials handling equipment
- No.1 counter-balance forklift for over 27 years
- Leading product, safety and environmental initiatives
- 100% Toyota owned branches
- Australia's largest rental fleet with over 14,500 units
- Forklift rentals from 1 day to 5 years with flexible finance options available
- 350+ service support staff & 250+ service vans

And when you have to make every cent count without lessening productivity, a quality used forklift from Toyota Material Handling can be a cost-effective solution. We have a huge range of forklift brands priced to sell and ready to work, with options to suit all budgets. To view our extensive range of used forklifts simply visit www.tmhpreowned.com.au

There's never been a better time to get Australia's best range of material handling solutions working for you.



Toyota Service Advantage

At Toyota Material Handling, we place an important emphasis on expert service to keep your forklift working and your servicing costs as low as possible.

No matter what forklift brand you use, Toyota Material Handling's factory trained technicians use the latest diagnostic equipment to ensure a fast and accurate diagnosis, that helps to save you time and money.

It's all part of our Toyota Service Advantage, and just another reason why a Toyota Material Handling service is genuinely better for your forklift and your pocket.



For your nearest Toyota Material Handling branch call or visit our website.

1800 425 438

www.toyotamaterialhandling.com.au



Toyota Material Handling Australia (TMHA) has used its best endeavours to ensure brochure information is correct when published. All images are used for illustration purposes only. TMHA, to the extent permissible at law, is not liable to any person for loss or damage arising from reliance upon information contained in this brochure. Distributed nationally by Toyota Material Handling Australia Pty Limited ABN 38 104 644 635, 8 Secombe Place Moorebank NSW 2170. Printed March 2014.

AUSTRALIA'S FAVOURITE FORKLIFT RANGE JUST GOT A LOT BIGGER!



8FG/FD
1.0 - 3.0 tonne

NEW MODELS
8FG/FD
3.5 - 5.0 tonne

NEW MODELS
8FG/FD
6.0 - 8.0 tonne

ENGINE POWERED FORKLIFT
8SERIES
8FG/8FD 1.0to8.0tonne



*AITA Statistics Ytd December 2013

Discover 8 key reasons why the Toyota 8-Series is Australia's favourite counter-balance forklift range.*

ENGINE POWERED FORKLIFT
8SERIES
8FG/8FD 1.0 to 8.0 tonne

DURABILITY

1 Toyota engines - tough, reliable and environmentally friendly



Load-sensing Power Steering (LSPS)[†]

This adjusts the amount of power-steering fluid according to the load burden on the rear axle, reducing energy loss.

2-stator Torque-converter and Transmission[†]

Used to achieved optimal drive power and travel speed with no gear-change, helping to reduce fuel consumption.

Eco-mode[†] **OPT** Petrol Models

This restricts acceleration for traveling and load handling, further helping to improve fuel efficiency.

Note: This is included in Multifunction Display (OPT) and Deluxe Multifunction Display (OPT).

Engine Auto Stop[†] **OPT** Petrol Models

Automatically stops the engine if the operator sets the parking brake but forgets to turn off the engine.

Note: This is included in Deluxe Multifunction Display (OPT). Make sure to follow proper parking process when parking the forklift. (e.g. turn off the engine)

Travel Speed Control **OPT^{††}** Petrol Models

This limits the maximum speed to a preset level. Low-speed setting enables the operator to turn on and off the setting.

Maximum Speed Limitation

Low-speed Setting

[†]Available only on the Toyota 8-Series 3.5 - 8 tonne models.

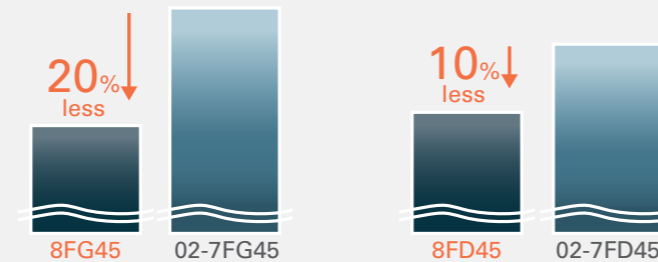
^{††}Selection of these features requires installation of additional options as well.



PRODUCTIVITY

2 Lower fuel consumption[†]

This limits the maximum speed to a preset level. Low-speed setting enables the operator to turn on and off the setting.



3 Outstanding visibility



Excellent Upward Visibility

Excellent Fork-tip Visibility

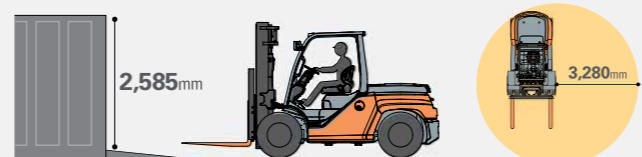


Rear-pillar Assist Grip

This assist grip with horn button supports the driving position and offers easy horn operation while travelling in reverse.

4 Compact body[†]

The image shown is 8FD70



Low overall height

Small turning circle

[†]Available only on the Toyota 8-Series 3.5 - 8 tonne models.



OPERABILITY

5 Easy entry and exit



Large assist grip



Low and wide step



6 Roomy operator's compartment

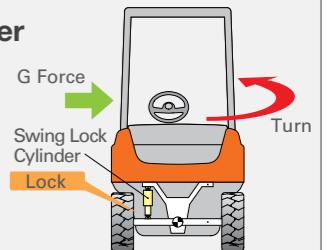


SAFETY & STABILITY

7 System of Active Stability (SAS)

Active Control Rear Stabiliser

An onboard computer monitors the movement of the forklift and locks the swing of the rear axle when necessary, such as during turns.



Note: This function is not installed when the forklift is equipped with dual front tires. (Includes 6-8 tonne models)

Active Mast Function Controller



Tilt



Provides fast handling and easy operation

Automatic Fork-leveling Control

Active Mast Front-tilt Angle Control

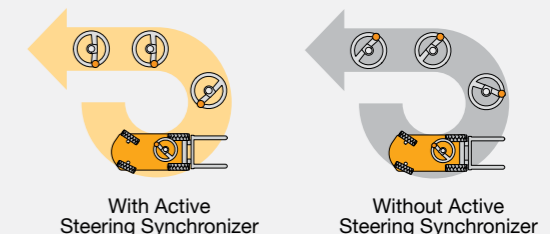
The angle of forward mast tilt is automatically controlled to match the lift height and load weight.

Active Mast Tilt Speed Control

Automatic control of mast tilt speed at high mast heights helps to prevent load spills.

Active Steering Synchroniser

This feature ensures that the angle of the steering wheel corresponds to the angle of the rear steered wheels.



With Active Steering Synchronizer

Without Active Steering Synchronizer

8 Operator Presence Sensing (OPS)



This system uses a switch sensor to detect the presence of the operator. If the operator is not in the normal operating position, travel power is interrupted and load handling operations are stopped.